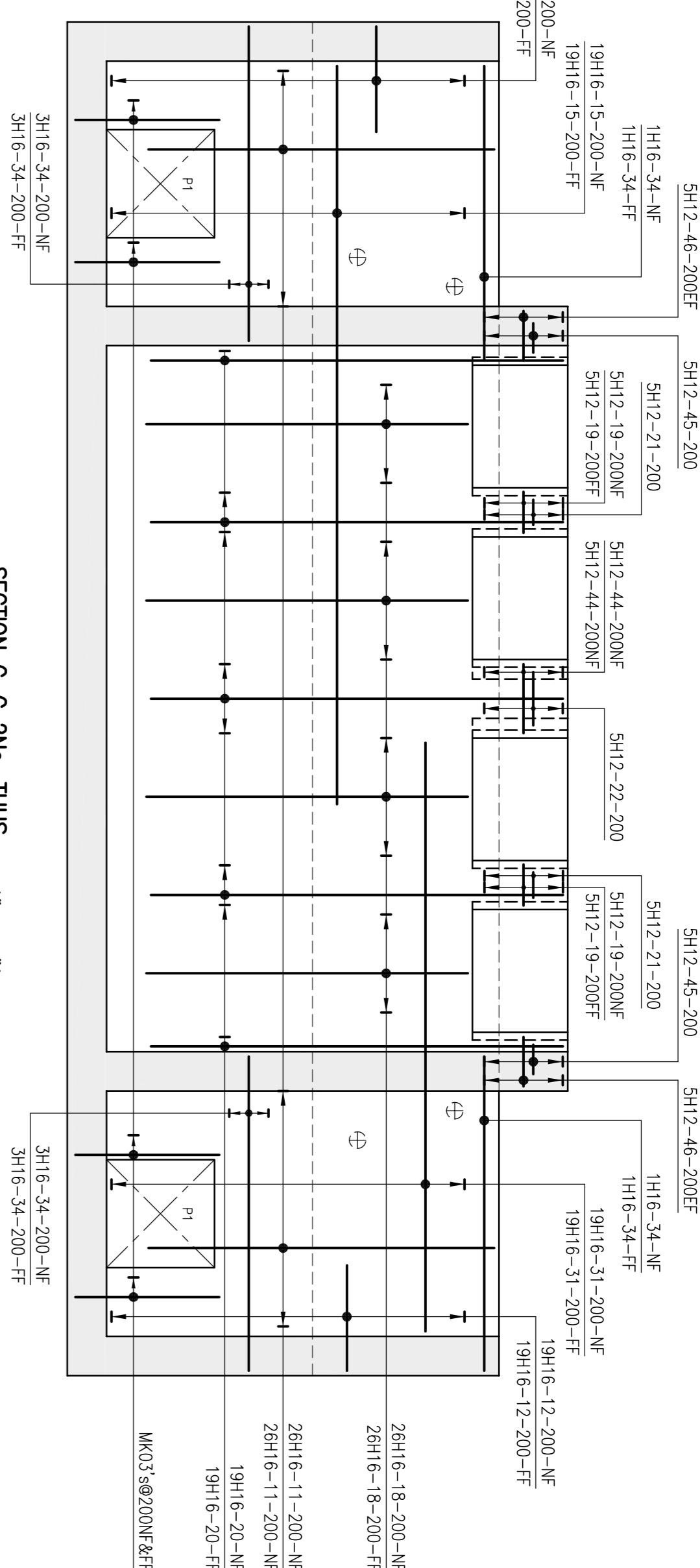
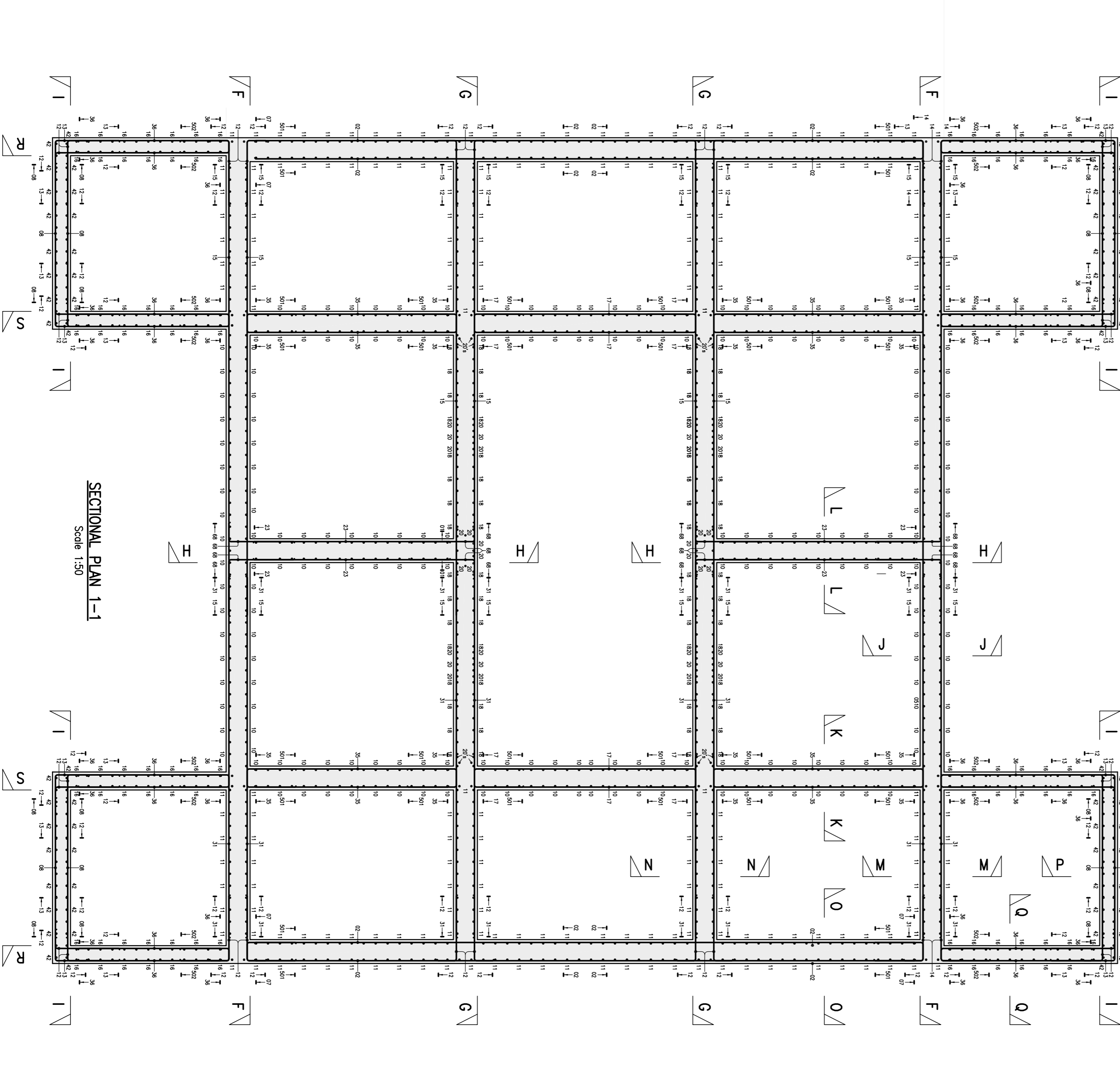


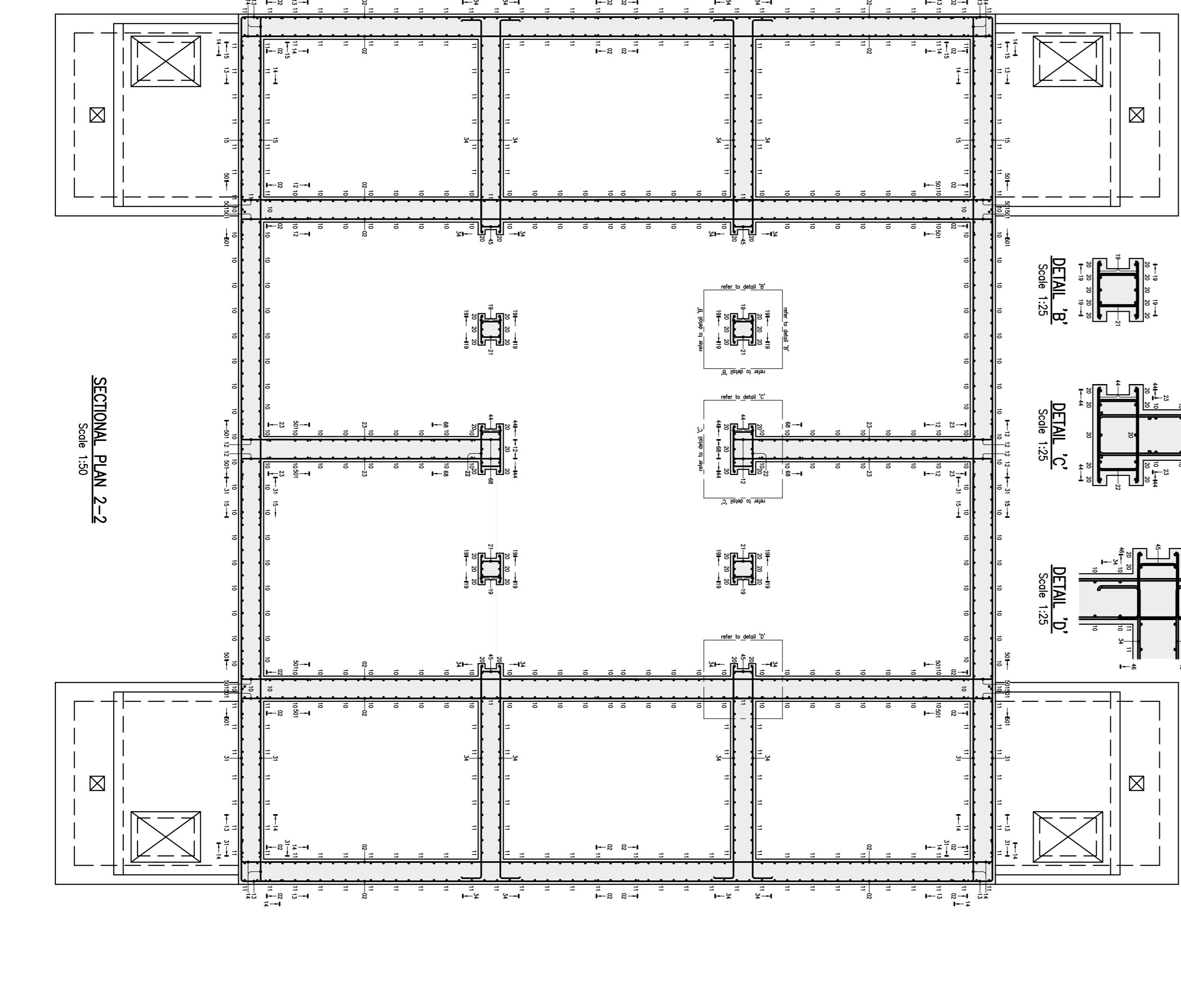
SECTION F-F 2No. THUS
Scale 1:50



SECTION G-G 2No. THUS
Scale 1:50



SECTIONAL PLAN 1-1
Scale 1:50



SECTIONAL PLAN 2-2
Scale 1:50

- NOTES**
1. ALL DIMENSIONS IN MILLIMETRES AND ALL LEVELS IN METRES A.O.D. UNLESS STATED OTHERWISE.
 - 1.1. REINFORCEMENT IS OF HIGH YIELD STEEL BARS CONFORMING TO BS 4449 WITH A CHARACTERISTIC STRENGTH OF 500N/mm².
 - 1.2. NOMINAL COVER TO OUTERMOST REINFORCEMENT IS 40mm.
 - 1.3. BENDING DIMENSIONS AND SCHEDULING OF THE BARS FOR THE REINFORCEMENT IS IN ACCORDANCE WITH BS 8666:2005.
 - 1.4. CHAIR BARS AND SPACERS ARE NOT SCHEDULED. THE CONTRACTOR TO PROVIDE CHAIRS AND SPACERS AT NO MORE THAN 1m CENTRES AS NECESSARY TO SUPPORT REINFORCEMENT AND MAINTAIN SPECIFIED COVER DURING PLACING OF CONCRETE.
 - 1.5. ALL LAPS ARE NOMINAL 40 x BAR DIA. (ABSOLUTE MINIMUM 38 x BAR DIA.) WHEN BARS OF A DIFFERENT DIAMETER ARE LAPPED, THE LAP IS 40 x THE SMALLEST BAR DIAMETER.
 - 1.6. REINFORCEMENT LOCATION ABBREVIATIONS AS FOLLOWS -
 ARR - ALTERNATE BARS REVERSED
 ASS - ALTERNATE PARS REVERSED
 AFS - ALTERNATE BARS STAGGERED
 NF - NEAR FACE
 FF - FAR FACE
 EF - EACH FACE
 T - TOP
 B - BOTTOM
 AW - ALTERNATING WITH
 BW - BUNDLED WITH
 - 1.7. REINFORCEMENT NOTATION AS FOLLOWS
 10 H10-02-200-T-ASS
 P LACING / FINING
 DETAILS
 LOCATION
 SPACING
 BAR MARK
 DIAMETER
 TYPE - H - HIGH YIELD
 NUMBER OF BARS
 - 1.8. REINFORCEMENT FOR THIS SET OF DRAWINGS IS LISTED ON BAR SCHEDULE REF:- 120640-03-30-SHEETS 310-01 TO 03.